

# Trade Opportunities With Africa



PORTMIAMI  
GLOBAL GATEWAY



# PortMiami: Economic Impact



**\$43 Billion**

Contributed  
to local economy.



**334,000**

Jobs in South Florida



*PortMiami is the second economic engine for Miami-Dade County.*



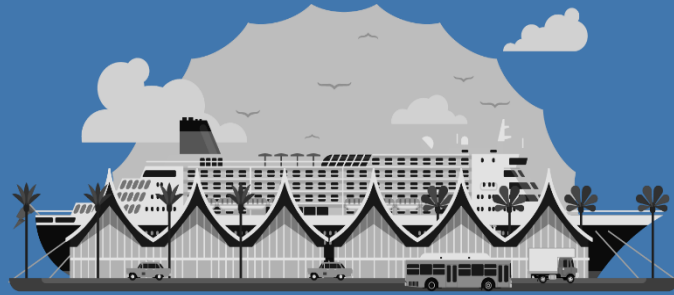
# PortMiami: At a glance

Cruise statistics (FY2023)



7.3

million passengers



9

passenger terminals



956

cruise calls



\$5.8

billion generated



*PortMiami is the cruise capital of the world.*



# PortMiami: At a Glance

Cargo Statistics FY2023



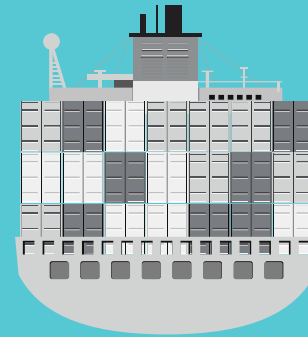
1.1

million TEUs



9.8

million tons



885

cargo ships



\$48

billion generated

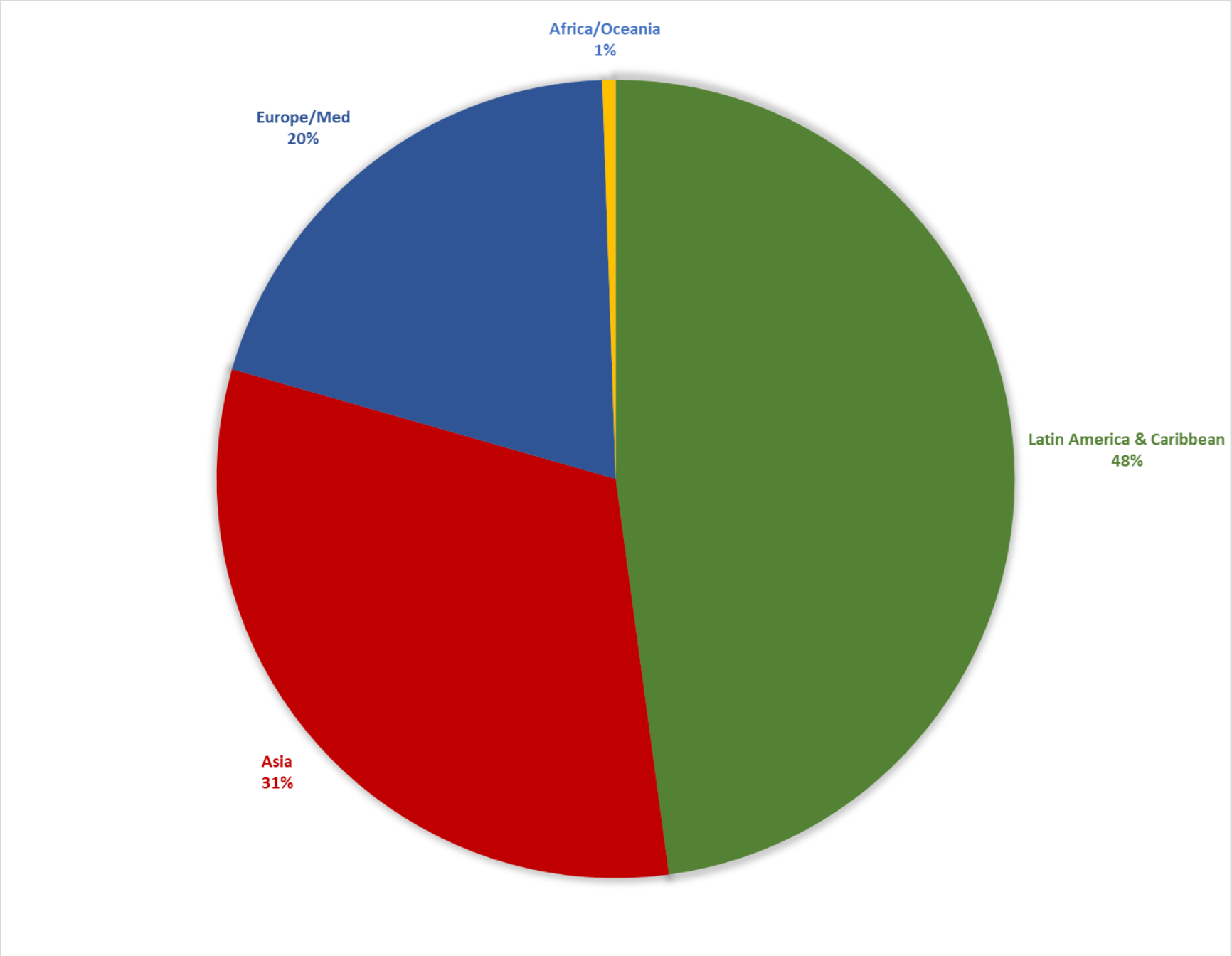
*PortMiami has surpassed the 1 million TEU mark for 9 consecutive years and 1.2 million TEUs in 2021 and 2022.*



*PortMiami is the number one container port in Florida.*



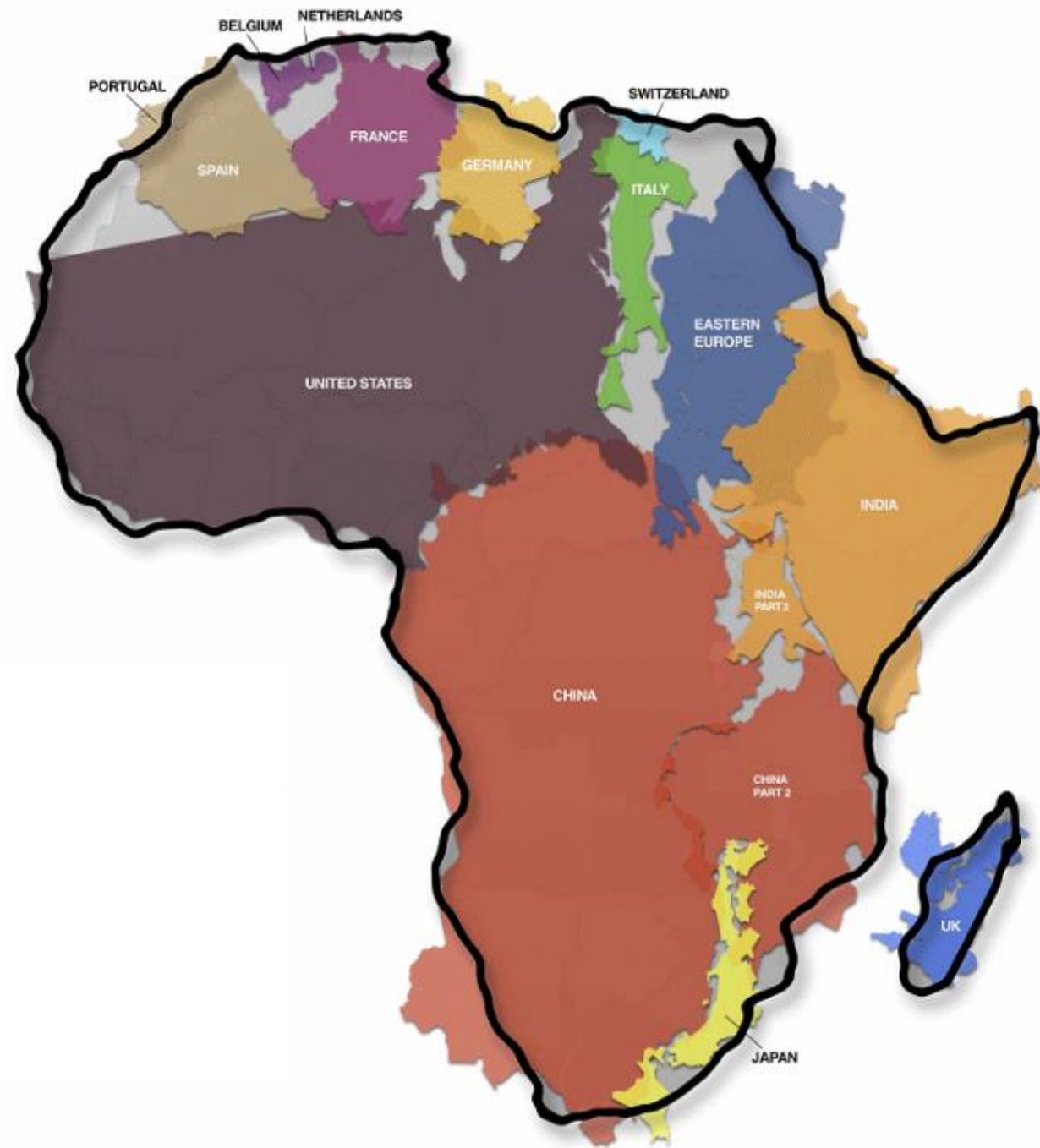
# PORTMIAMI - MARKET SHARE BY REGION FY2023



# Natural Resources



# The True Size of Africa



# There are 54 countries in Africa





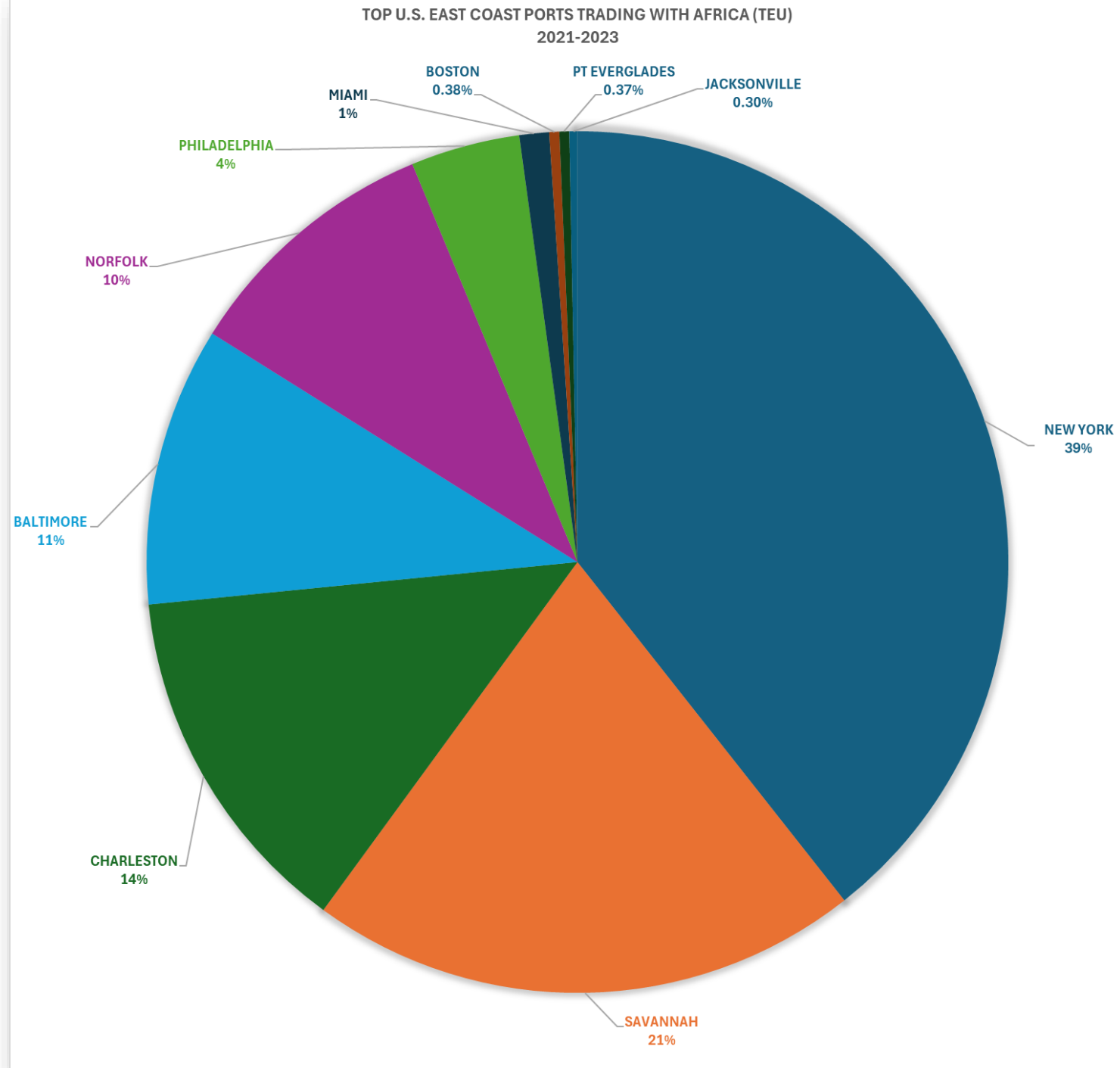
## There are 54 countries in Africa

- Algeria
- Angola
- Benin
- Botswana
- Burkina Faso
- Burundi
- Cameroon
- Cape Verde
- Central African Republic
- Chad
- Camoros
- Democratic Republic of the Congo
- Republic of the Congo
- Djibouti
- Egypt
- Equatorial Guinea
- Eritrea
- Ethiopia
- Gabon
- Gambia
- Ghana
- Guinea
- Guinea-Bissau
- Ivory Coast
- Kenya
- Lesotho
- Liberia
- Libya
- Madagascar
- Malawi
- Mali
- Mauritania
- Mauritius
- Morocco
- Mozambique
- Namibia
- Niger
- Nigeria
- Rwanda
- Sao Tome and Principe
- Senegal
- Seychelles
- Sierra Leone
- Somalia
- South Africa
- South Sudan
- Sudan
- Swaziland
- Tanzania
- Togo
- Tunisia
- Uganda
- Zambia
- Zimbabwe



# Top U.S. East Coast Ports Trading with Africa (TEU)

U.S. East Coast Ports	TEU
1 NEW YORK	360,684
2 SAVANNAH	189,327
3 CHARLESTON	122,661
4 BALTIMORE	95,937
5 NORFOLK	90,158
6 PHILADELPHIA	37,537
7 MIAMI	10,208
8 BOSTON	3,443
9 PT EVERGLADES	3,368
10 JACKSONVILLE	2,778
<b>Total</b>	<b>916,101</b>



\*TEU – Twenty-foot Equivalent Unit



Data from Piers

## Trade Balance –Imports/Exports

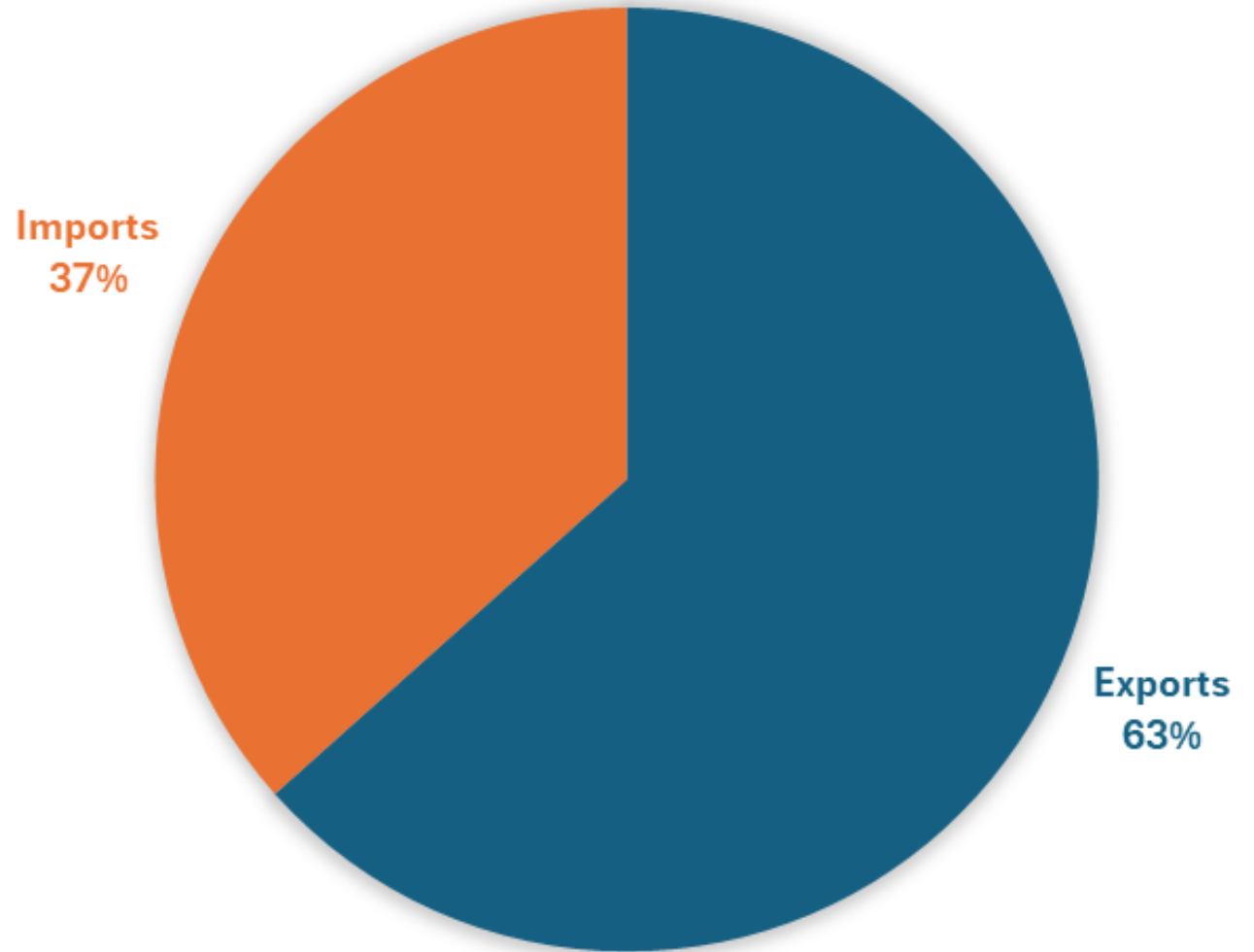
### Top 5 Commodity Groups imported from Africa:

1. Food Products/Fruits &Vegetables
2. Apparel/Textiles
3. Aluminum/Iron/Steel
4. Beverages
5. Beauty care

### Top 5 Commodity Groups exported to Africa:

1. Motor Vehicles/Vehicle Parts
2. Machinery
3. Pharma & Medical Equipment
4. Electronics
5. Consolidated Cargo

## TRADE BALANCE



# Trade Numbers by TEU

Trade by TEU	2021	2022	2023	Grand Total
NEW YORK	130,902	118,269	111,513	360,684
SAVANNAH	60,976	64,823	63,528	189,327
CHARLESTON	48,360	37,007	37,294	122,661
BALTIMORE	35,968	31,457	28,512	95,937
NORFOLK	33,025	29,513	27,619	90,158
PHILADELPHIA	14,710	10,993	11,834	37,537
MIAMI	3,509	2,987	3,712	10,208
BOSTON	1,467	1,147	829	3,443
PT EVERGLADES	1,061	1,530	777	3,368
JACKSONVILLE	670	983	1,125	2,778
WILMINGTON NC	636	440	88	1,163
PT CANAVERAL	323	278	245	847
FALL RVR	81	72	58	210
TAMPA	6	2	116	124
PORTLAND ME	94	24		118
CHESTER PA	6	2	2	10
W PALM BCH	4			4
PITTSBURGH			2	2
<b>Grand Total</b>	<b>331,799</b>	<b>299,526</b>	<b>287,254</b>	<b>918,579</b>

\*TEU – Twenty-foot Equivalent Unit

# Trade Numbers by Value (\$)

Trade by Value	2021	2022	2023	Grand Total
NEW YORK	10,659,761,369	10,673,404,625	10,073,160,127	31,406,326,121
SAVANNAH	2,428,137,850	2,663,034,435	2,963,114,904	8,054,287,189
BALTIMORE	4,100,892,180	3,355,148,548	2,820,519,877	10,276,560,605
NORFOLK	2,810,774,478	2,271,616,102	2,437,216,610	7,519,607,190
CHARLESTON	7,715,764,554	1,976,160,646	1,955,550,928	11,647,476,128
PHILADELPHIA	1,603,465,511	1,617,902,830	1,577,375,348	4,798,743,689
WILMINGTON DE	746,553,200	1,206,782,578	1,342,243,569	3,295,579,347
CHESTER PA	366,597,621	961,543,802	1,007,633,486	2,335,774,909
WILMINGTON NC	272,430,328	153,912,055	446,074,535	872,416,918
JACKSONVILLE	808,242,476	512,064,112	445,810,474	1,766,117,062
BRUNSWICK	214,128,484	260,309,630	376,975,421	851,413,535
PROVIDENCE	545,937,798	328,422,870	293,131,684	1,167,492,352
PAULSBORO			269,270,531	269,270,531
MIAMI	243,086,079	158,200,546	173,164,553	574,451,178
RICHMOND VA	85,822,166		103,154,049	188,976,215
PT EVERGLADES	90,873,853	96,343,312	87,738,448	274,955,613
MOREHEAD CY		10,921,543	61,762,516	72,684,059
PORTSMOUTH NH	10,579,962	17,343,760	53,921,991	81,845,713
BOSTON	113,646,638	72,148,390	49,417,217	235,212,245
PERTH AMBOY	93,473,976	74,452,277	28,398,189	196,324,442
NEWPORT NEWS	29,270,437	51,427,669	19,971,244	100,669,350
TAMPA	19,272,476	23,597,211	9,049,630	51,919,317
PT CANAVERAL	34,941,835	21,311,359	4,932,694	61,185,888
FALL RVR	3,176,070	3,270,490	1,938,623	8,385,183
PITTSBURGH			6,046	6,046
W PALM BCH	92,668			92,668
GLOUCESTER CY	4,477,288			4,477,288
PORTLAND ME	27,640,044	2,281,368		29,921,412
NEW HAVEN	52,489,428	28,734,383		81,223,811
<b>Grand Total</b>	<b>33,081,528,769</b>	<b>26,540,334,541</b>	<b>26,601,532,694</b>	<b>86,223,396,004</b>

Data from Piers



# PortMiami – Trade with Africa (TEU)

## West Africa – Targeted countries

- Senegal
- Sierra Leone
- Nigeria
- Ghana
- Ivory Coast
- Mauritania
- Liberia

West Africa is one of the world’s fastest growing regions. Each nation is endowed with diverse resources, and with trade and investment opportunities the region has the potential to become the most strategic trade connectivity with the East Coast of U.S.

\*TEU – Twenty-foot Equivalent Unit

Trade with Africa	2021	2022	2023	Grand Total
<b>MIAMI</b>	<b>3,509</b>	<b>2,987</b>	<b>3,712</b>	<b>10,208</b>
NIGERIA	823	711	1,365	2,899
REP. OF SOUTH AFRICA	578	621	566	1,765
GHANA	397	375	390	1,162
LIBYA	453	344	201	998
CAMEROON	160	164	210	534
TOGO	109	31	195	335
LIBERIA	70	114	97	281
IVORY COAST	77	99	100	276
TANZANIA	111	66	89	266
SENEGAL	74	57	55	186
THE GAMBIA	93	54	30	177
KENYA	34	42	85	161
SUDAN	154			154
ANGOLA	41	52	33	126
DJIBOUTI	39	48	28	115
BENIN	17	47	44	108
GABON	28	15	41	84
SIERRA LEONE	29	32	18	79
MOZAMBIQUE	41	7	12	60
FRENCH INDIAN OCEAN	31	5	24	60
CONGO (BRAZZVILLE)	7	18	33	58
MAURITANIA	19	17	12	48
GUINEA	22	11	9	42
NAMIBIA	10	11	21	42
ZAIRE	11	8	18	37
SOMALIA	27		4	31
MALAGASY REPUBLIC	2	17	7	26
MALI	22	1	2	25
SEYCHELLES		10	14	24
ETHIOPIA	10			10
UPPER VOLTA	10			10
EQUATORIAL GUINEA	1	4	2	7
ZAMBIA	3	2		5
WESTERN AFRICA, NEC	1		4	5
COMOROS			2	2
ZIMBABWE		2		2
BOTSWANA		2		2
UGANDA	2			2
MALAWI	2			2
LESOTHO		1	1	2
CENTRAL AFRICAN REP.			1	1
<b>Grand Total</b>	<b>3,509</b>	<b>2,987</b>	<b>3,712</b>	<b>10,208</b>

Data from Piers

